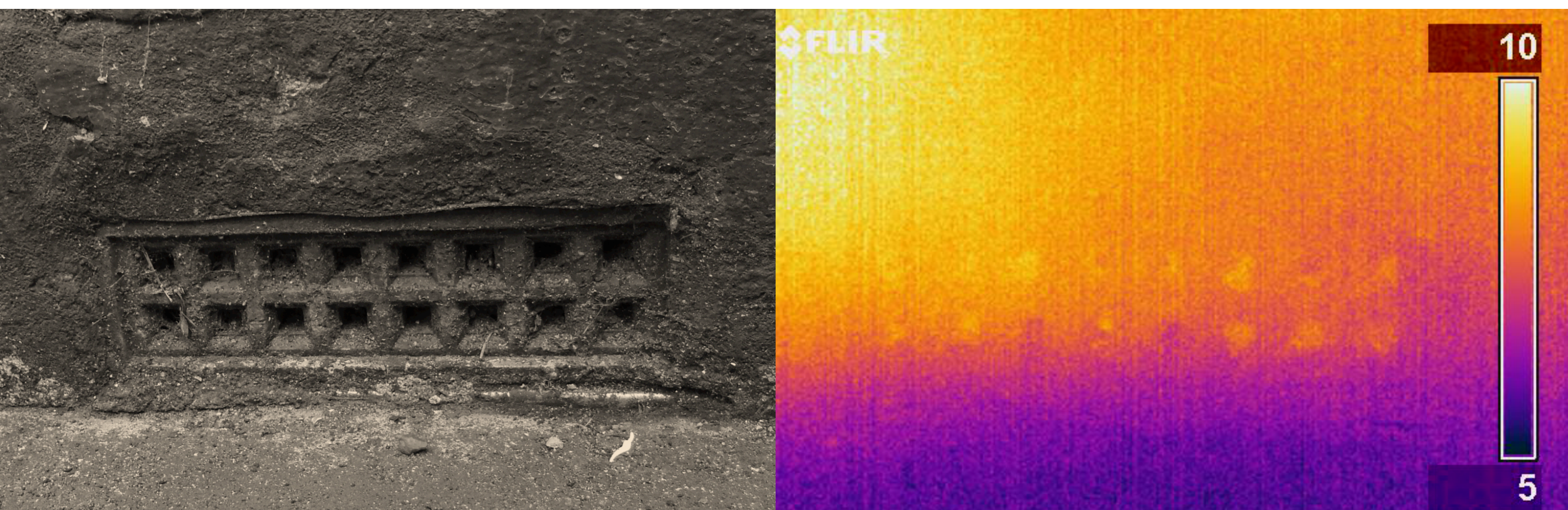


Context

There are around 7 million Victorian solid-walled dwellings in England (DCLG 2007), the majority of which will still exist by 2050. (SDC 2006)

Most such dwellings have un-insulated suspended timber ground floors. Heat loss from such floors leads to thermal discomfort and energy losses. Under-floor insulation is one of the Green Deal's approved measures, yet it is unclear what the *actual* heat loss is; both before and after insulation.



My research

My research set out to investigate how this heatloss could be measured *in-situ* and how this compares to predicted heat loss in literature and software modelling tools.

Stakeholder engagement opportunities

- DECC/government
- Green Deal providers
- Householders/the public
- Software providers
- Academic researchers