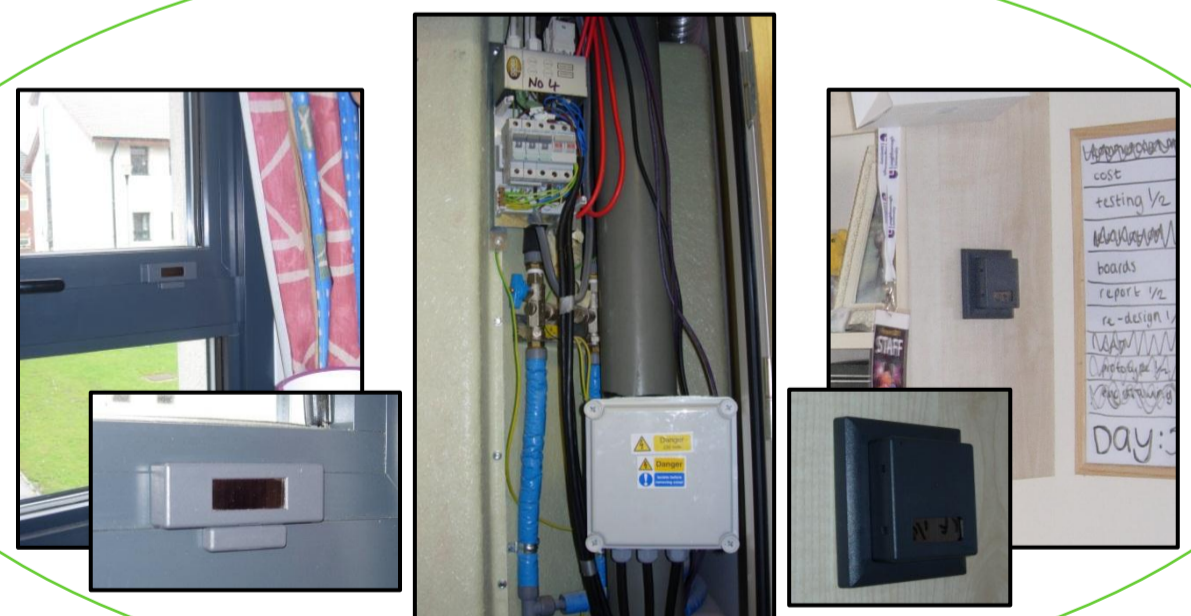
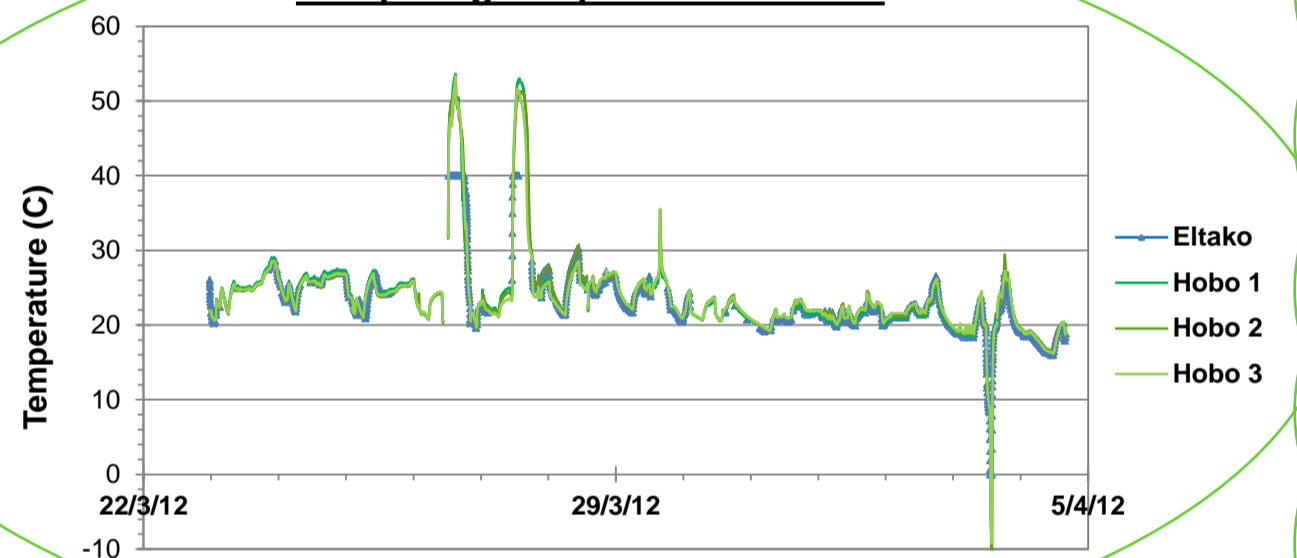


Progress in the Pilot Study

- A site inspection was conducted with an electrician to decide how best to install the electricity meters
- Equipment was purchased to monitor electricity consumption, temperature and window opening in one student bedroom
- Testing was carried out to understand equipment accuracy, signal strength, and the performance of the Eltako FVS software
- Sensors were installed in a volunteer's bedroom, three weeks of data will be obtained before they leave for summer
- Data collected from the pilot study (see example →) will inform the next installation of sensors and assumptions made for building simulations



Comparing Temperature Sensors



Electricity Consumed by Bedroom Sockets

